

Configuring WPA2 for Windows Vista and Windows 7

Requirements for wireless using WPA2 on Windows vista and Windows 7

-- Your wireless card must support 802.1x, AES and WPA2

Select “Start” then Control Panel on your Vista desktop. After the Control Panel window opens, double-click “Network and Sharing Center”

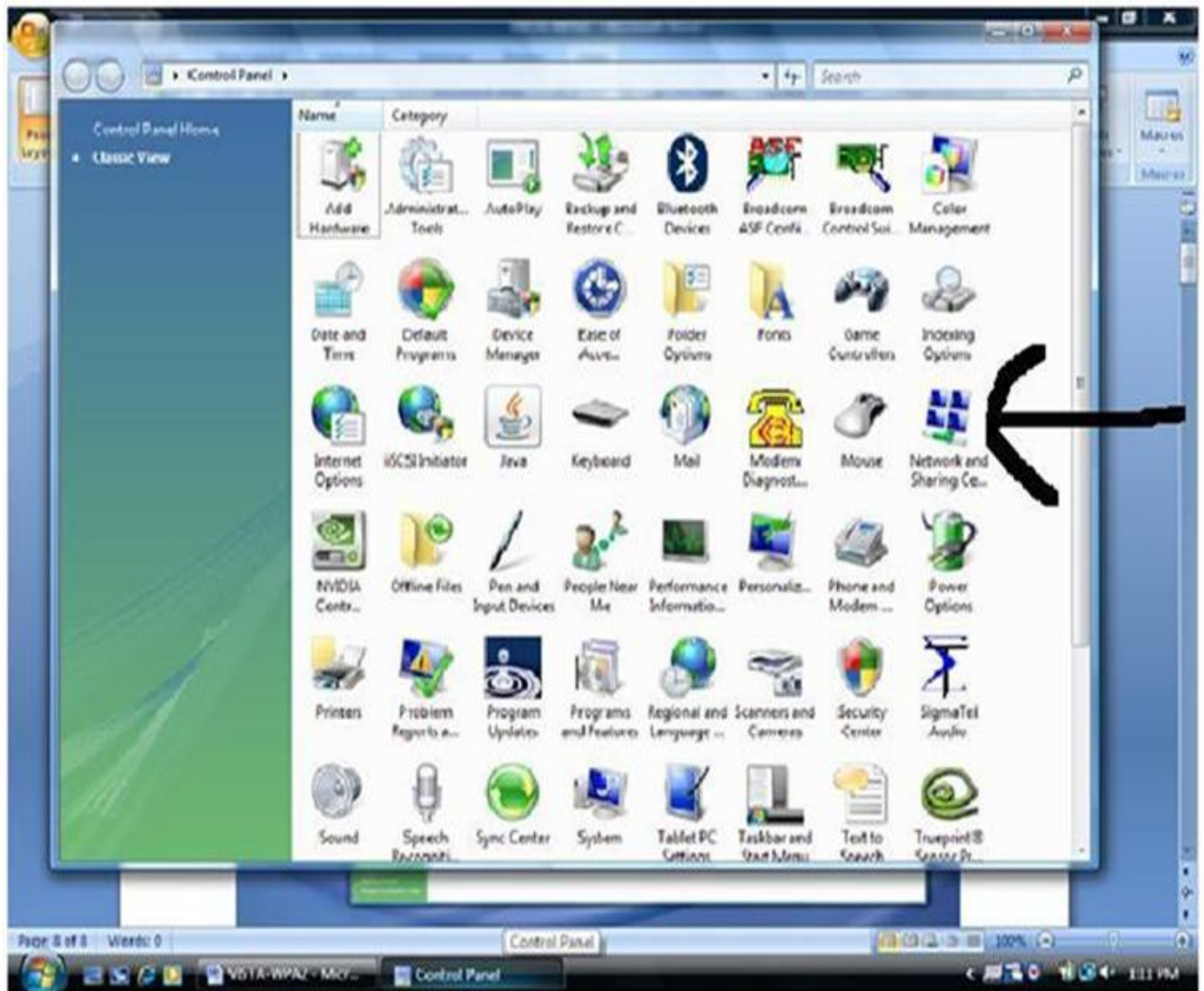


Fig. 19

Select “Manage wireless networks” as in Fig. 20

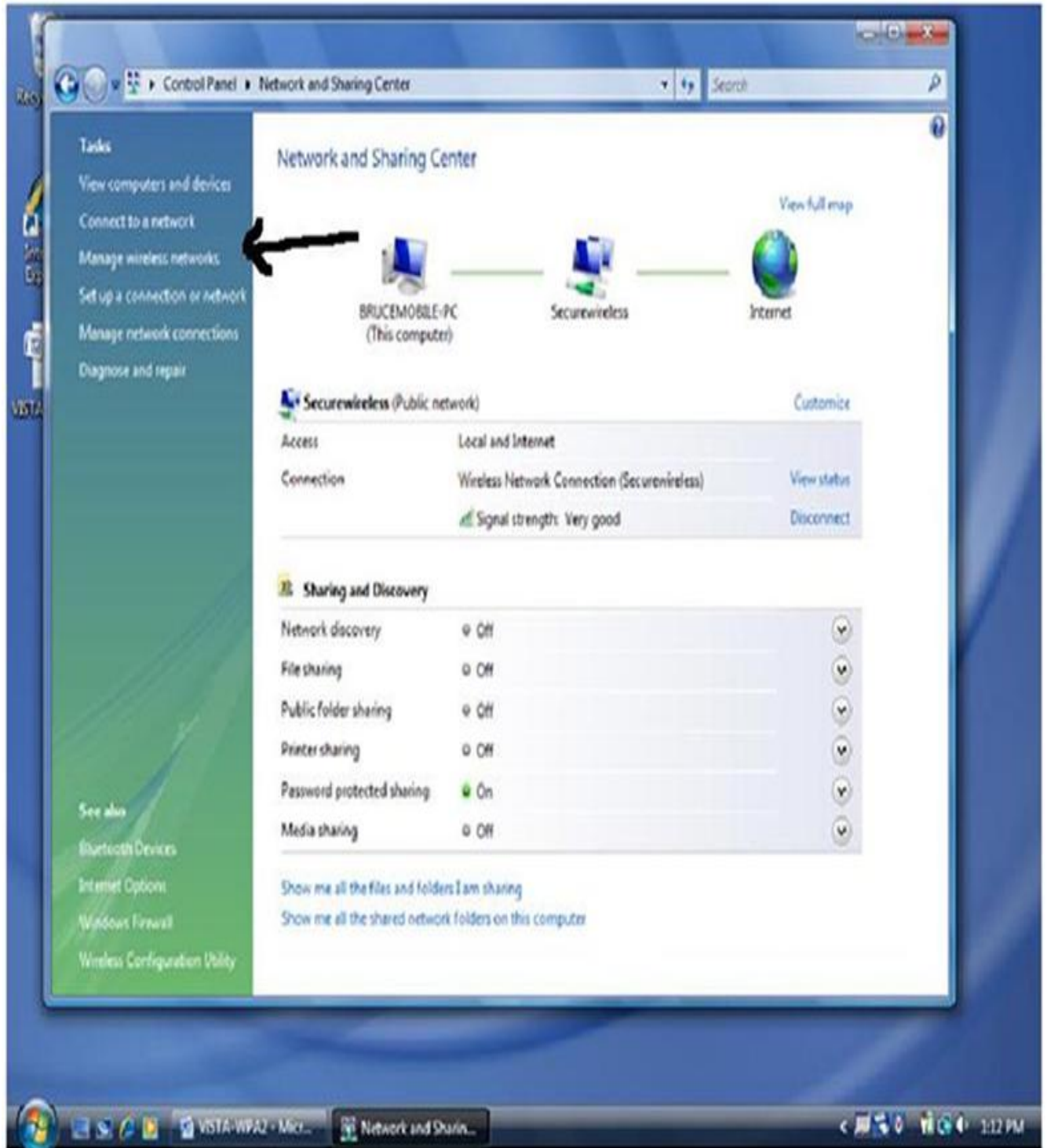


Fig.20

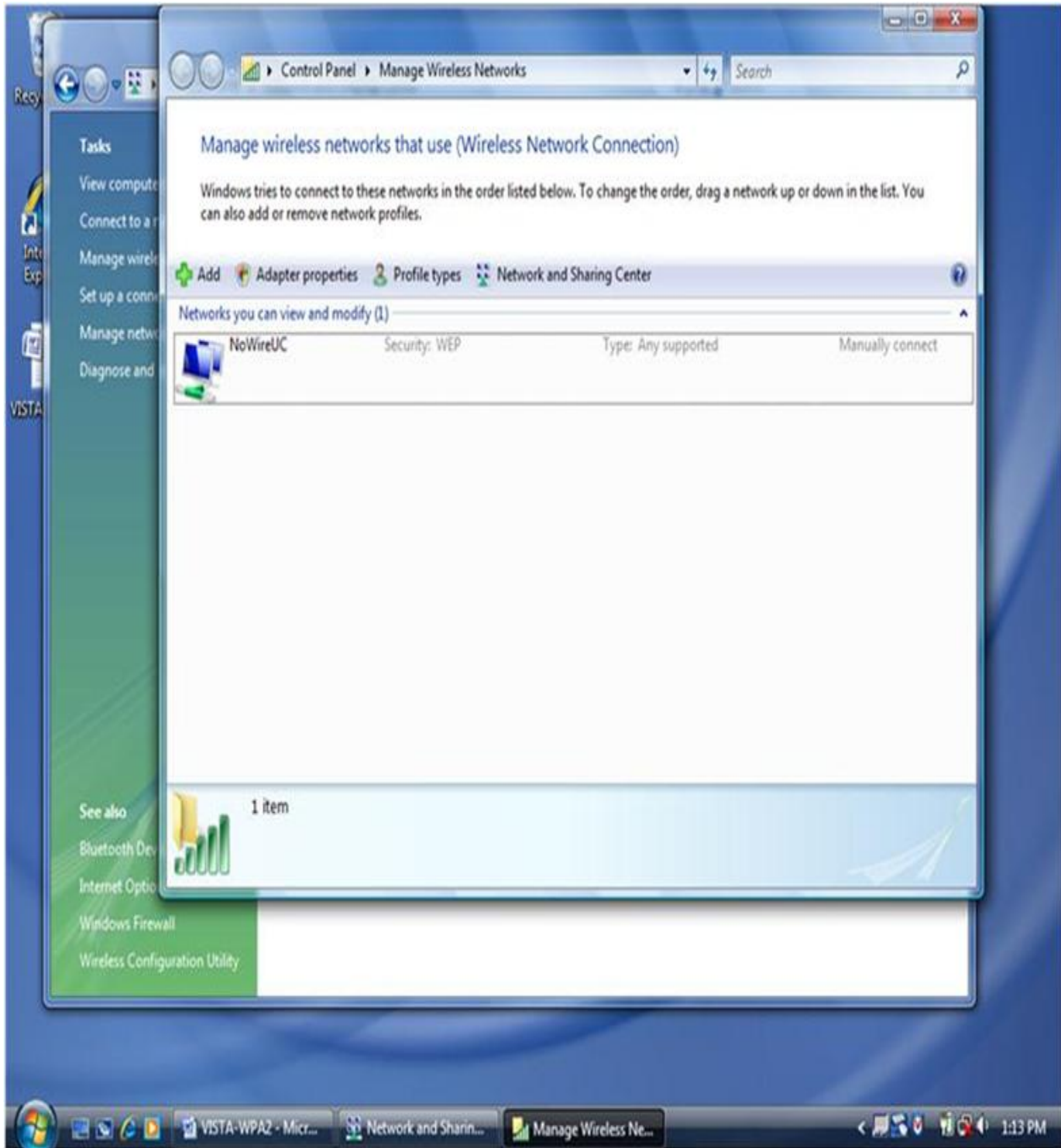


Fig. 21

You will then add a new wireless network to your machine.

After selecting “Add”, a new window will appear as in Fig. 22 below.

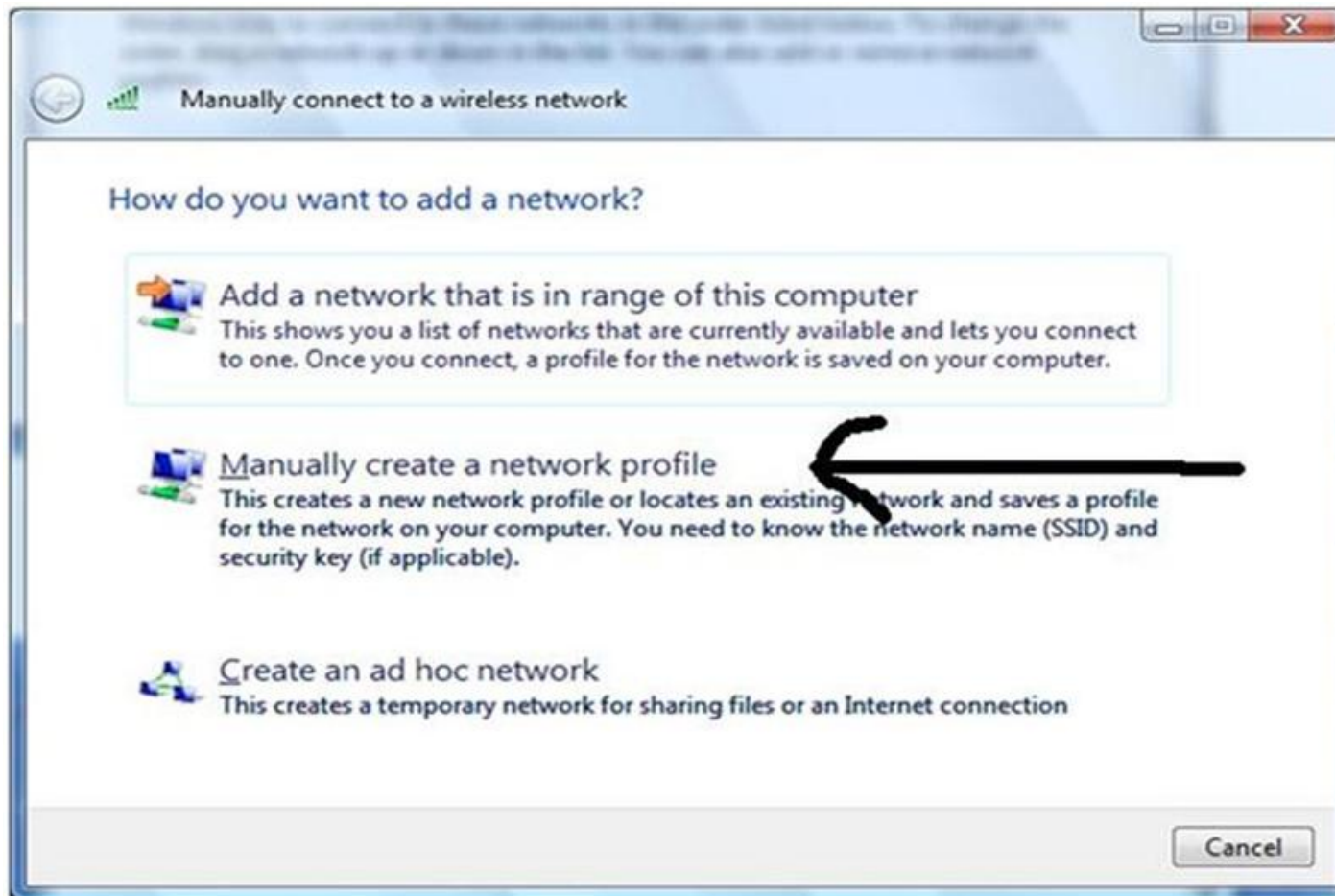


Fig.22

Select "Manually create a network profile"

A new window will appear (fig.23):

Enter **Securewireless** for the network name.

For the Security type, select **WPA2-Enterprise** from the drop down selection. The Encryption type will automatically populate with **AES** as in Fig. 23

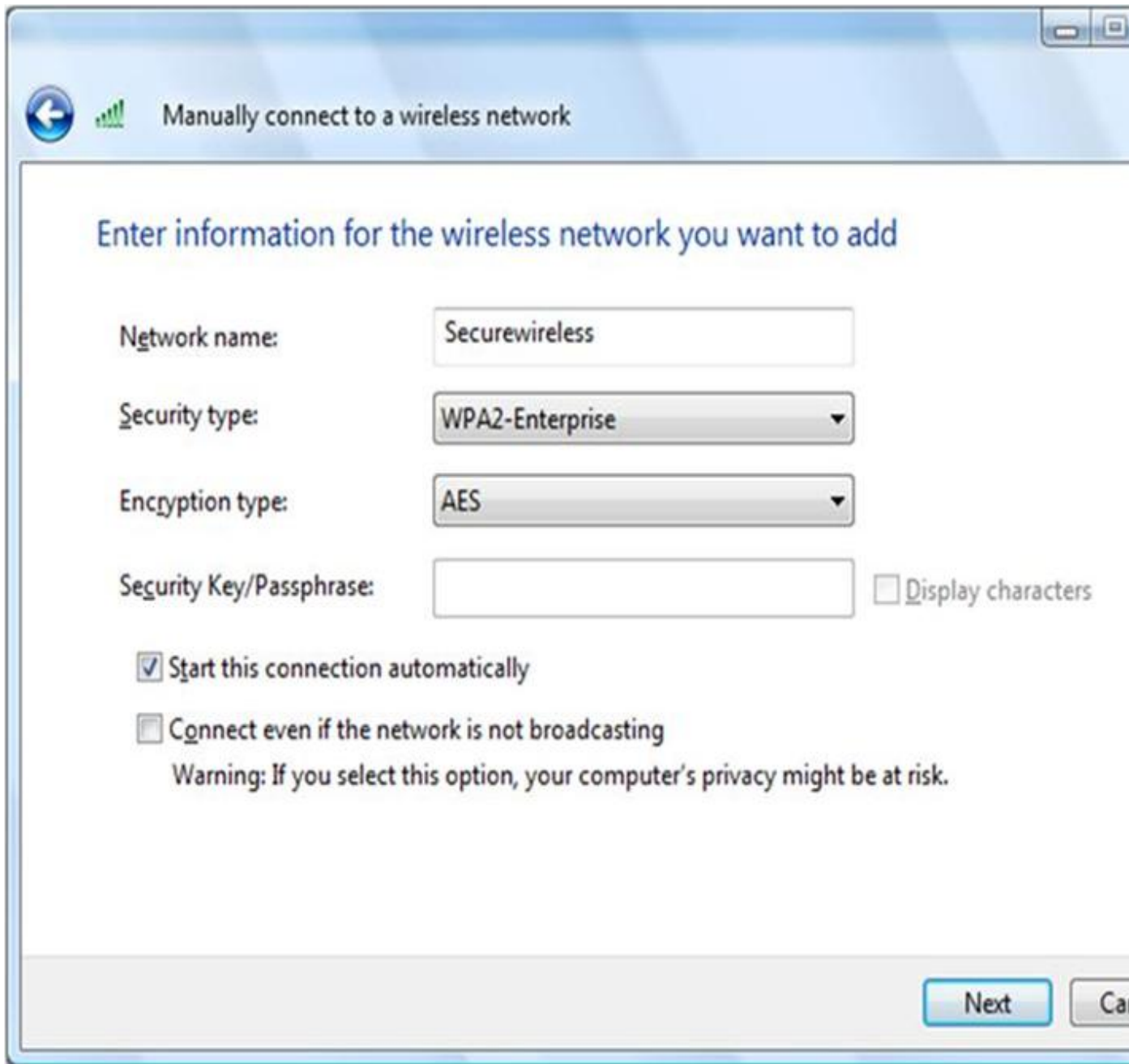


Fig. 23

Click the “next” button; A new window appears, click the “close” button.

You should now see a screen similar to figure 24. With **Securewireless** listed as one of the networks you can view and modify.

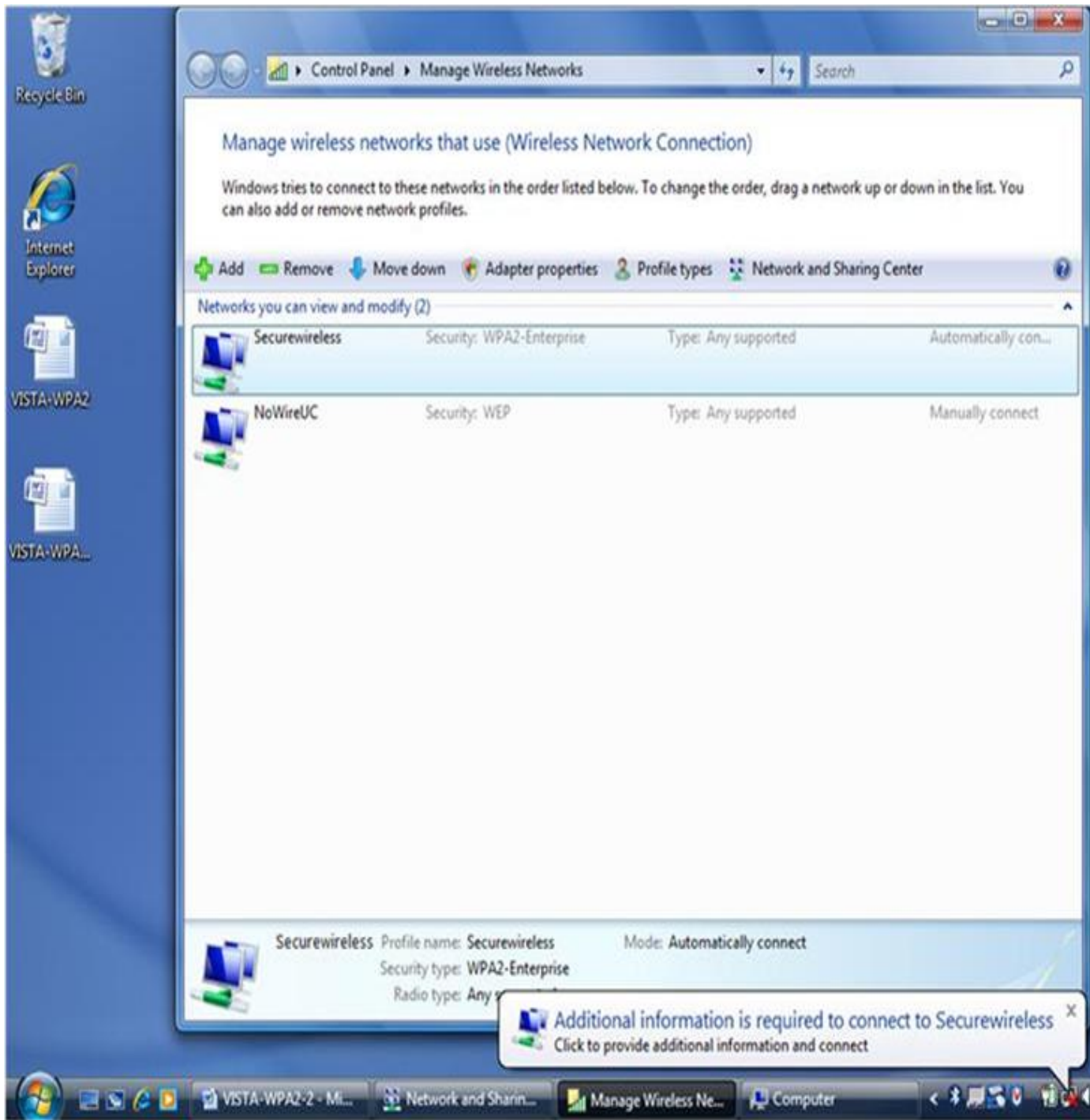


Fig. 24

Right-click on **Securewireless**, then select **Properties**

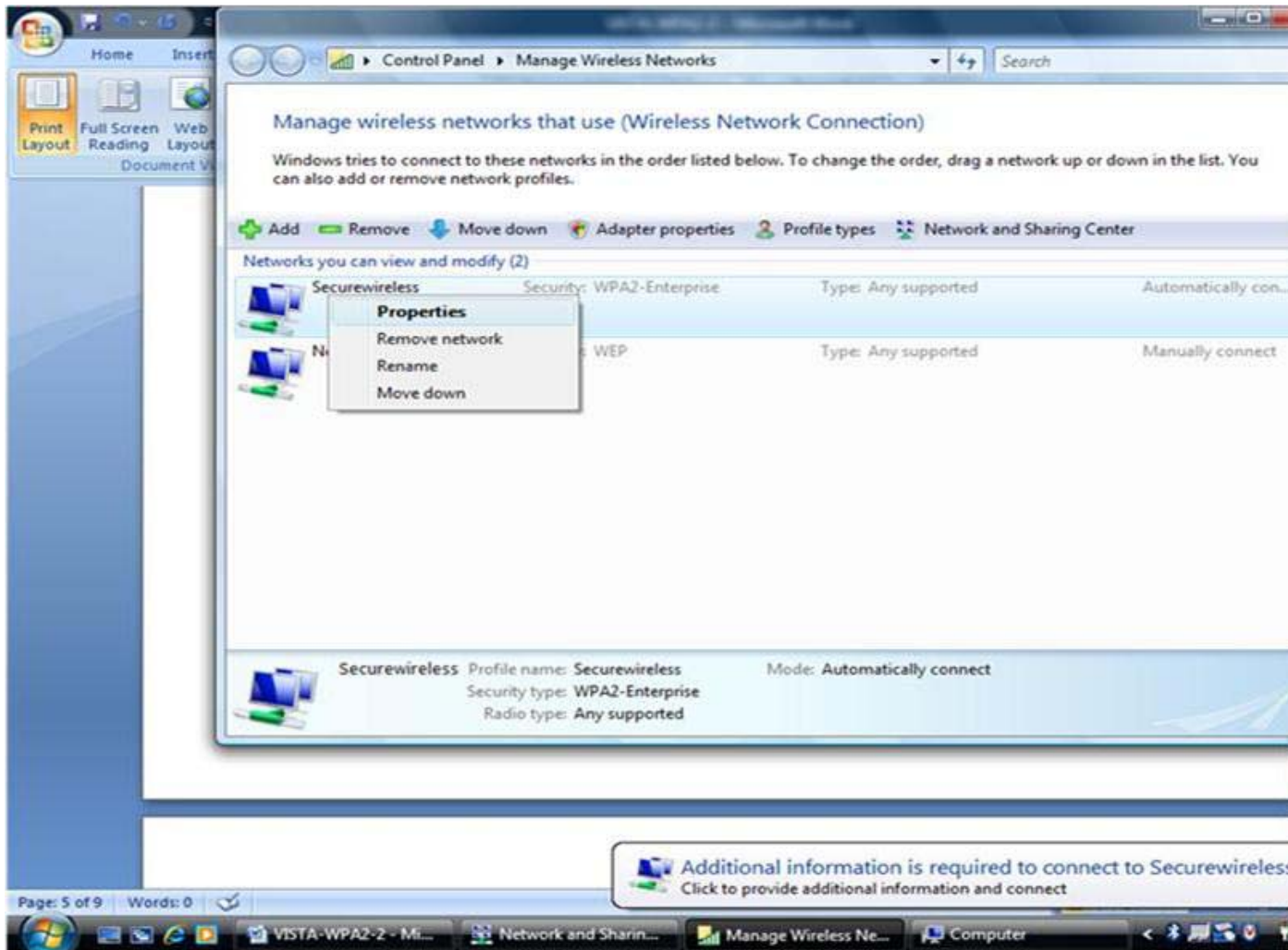


Fig. 25

In the pop-up window, verify that “Connect automatically when this network is in range” is the only box selected in this window.

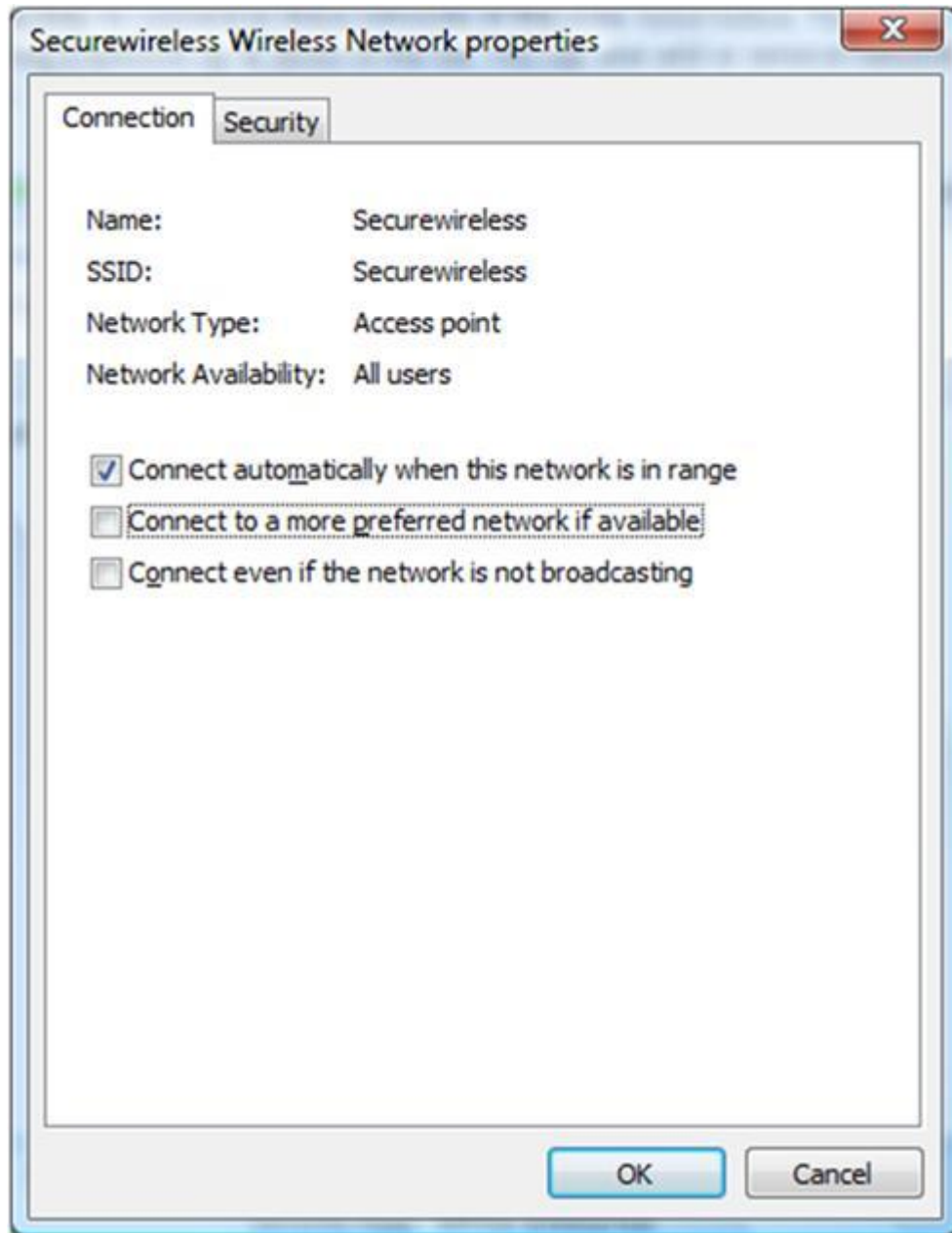
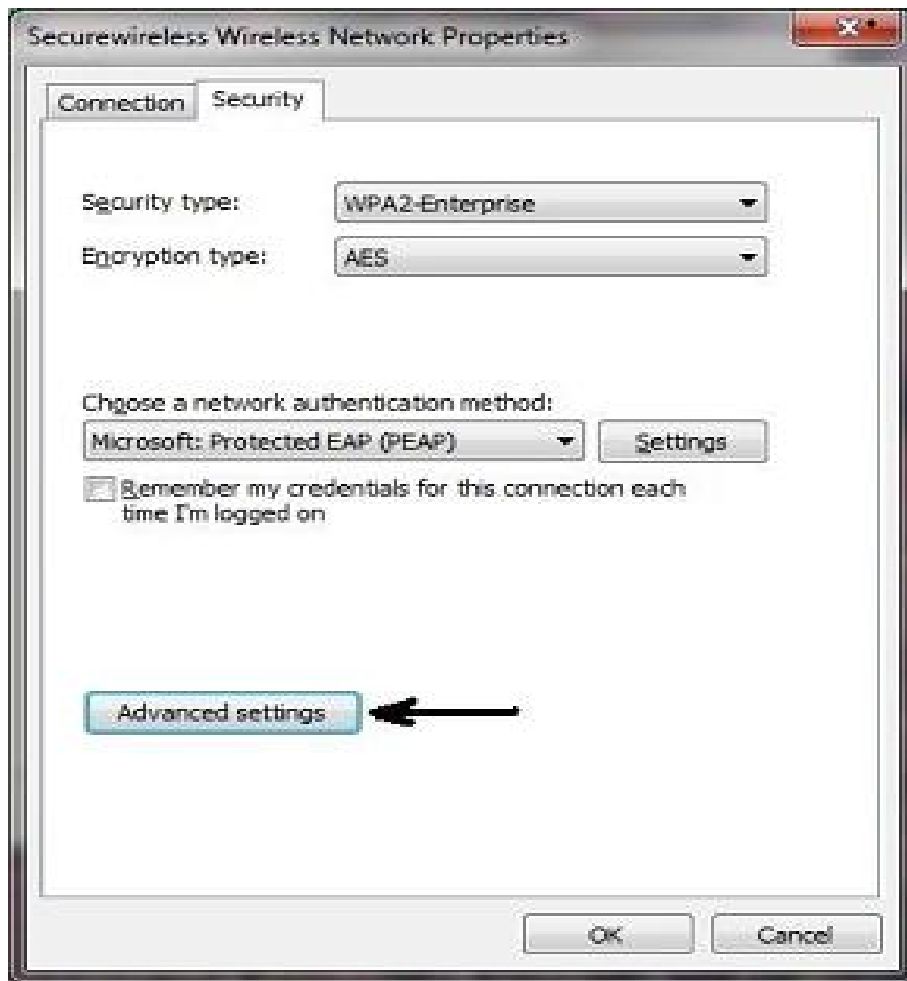


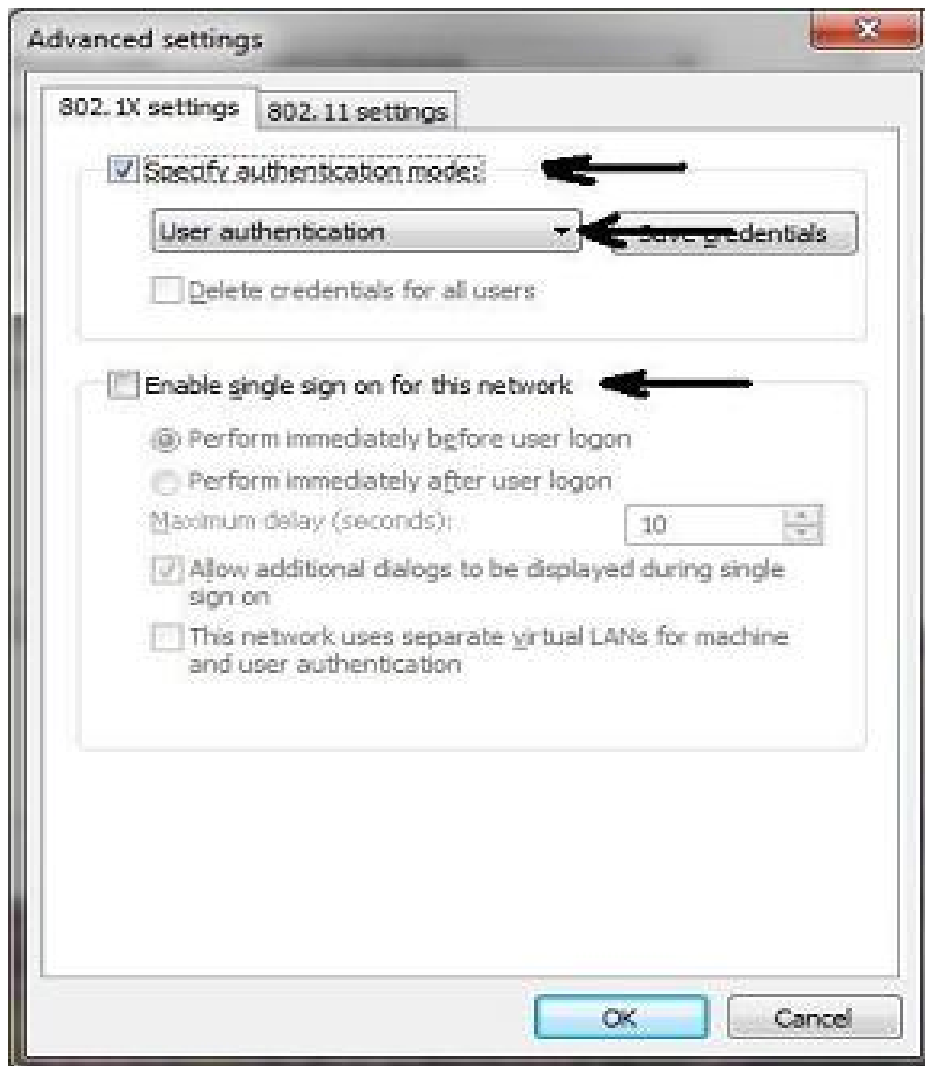
Fig. 26

Select the "Security" Tab

For Windows 7 users, perform these steps, Vista users can skip ahead to Resume



Click the **Advanced settings** button

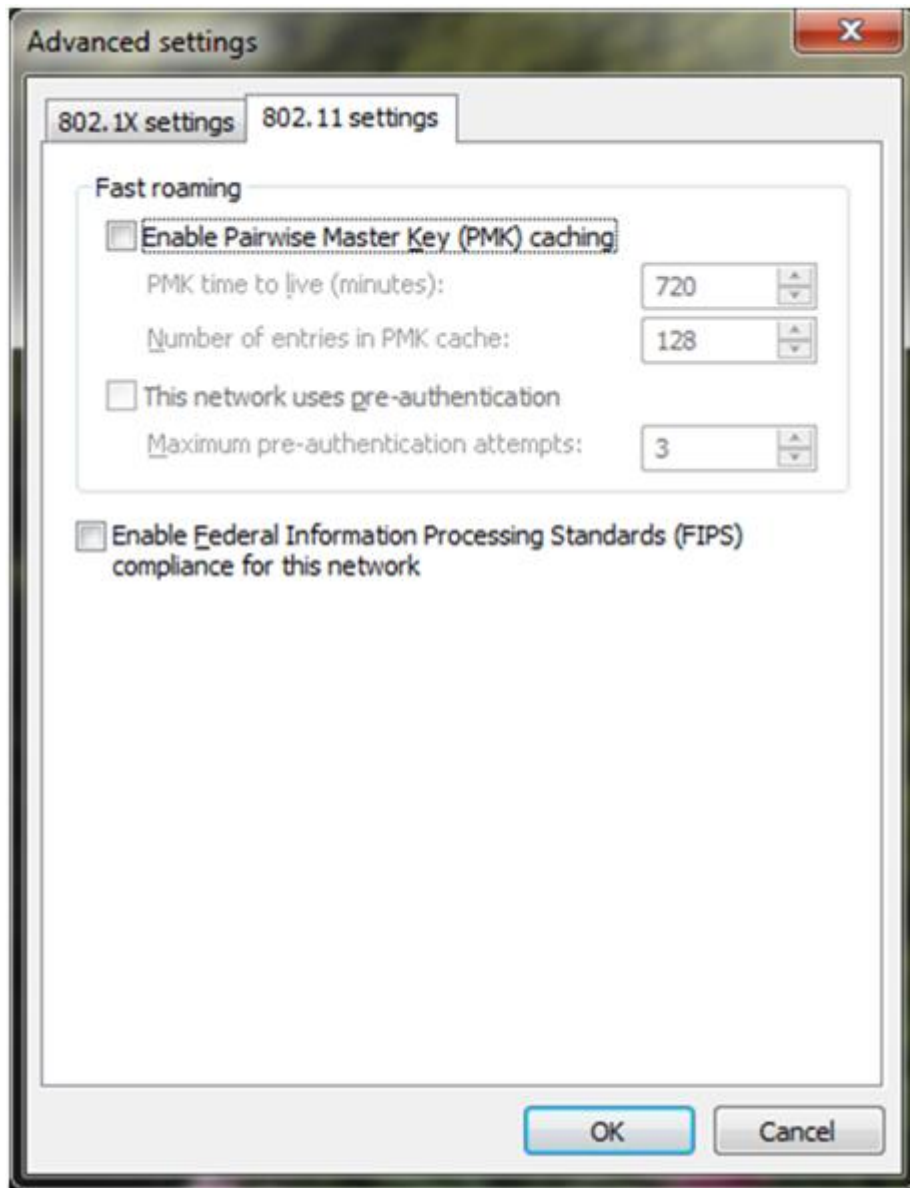


Specify authentication mode should be **checked**

Authentication mode should be **User Authentication**

Enable single sign on for this network unchecked

Click the 802.11 Tab and insure that all of the check boxes are unchecked



Click **OK**

Resume (Vista users start again from this point)

Continue Windows Vista and Windows 7 setup

Security Type should be **WPA2-Enterprise**

Encryption type should be **AES**

Network authentication method should be **PEAP**

The Cache user information checkbox should be **unchecked**.

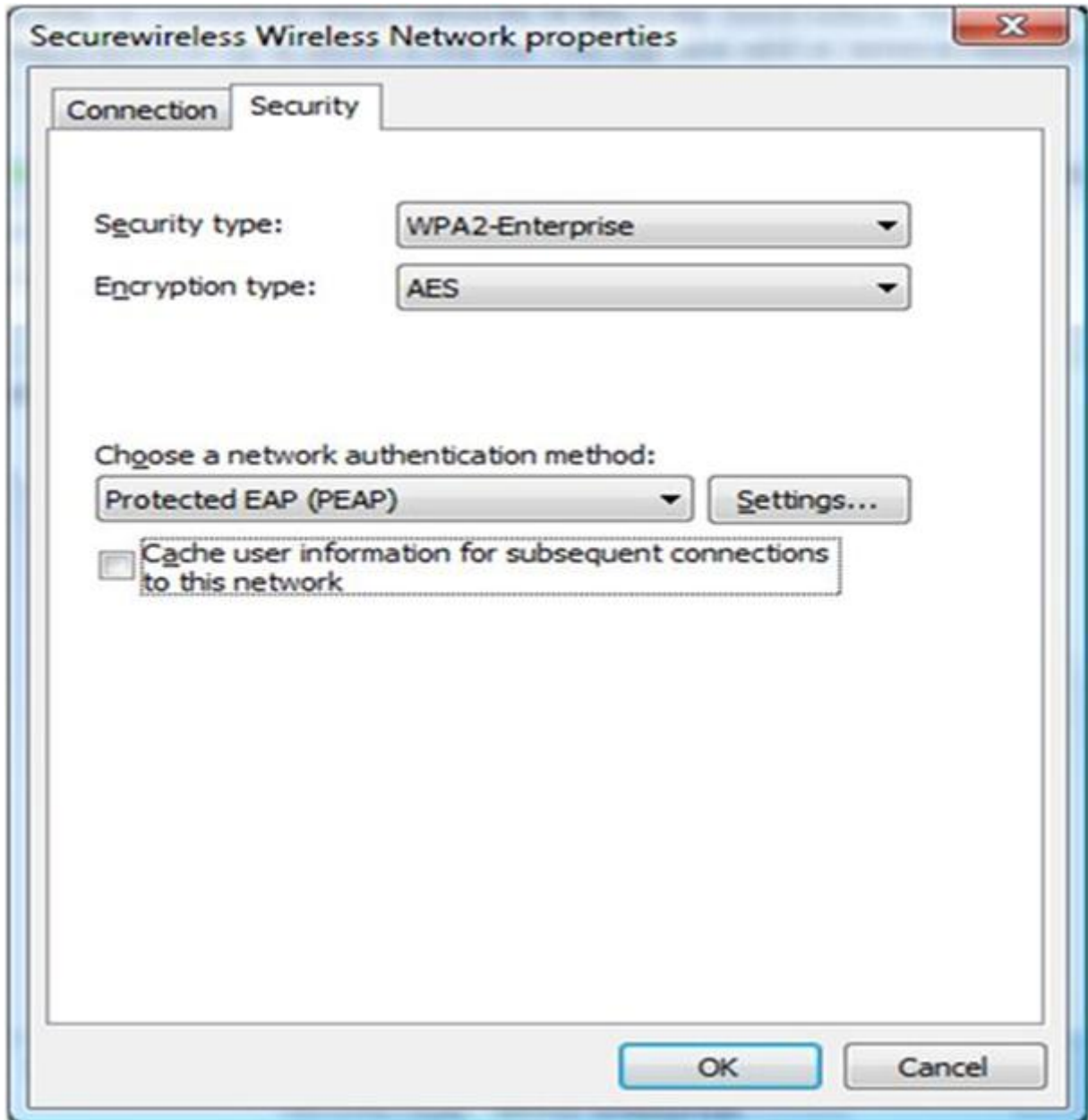


Fig. 27

Select the "Settings" button, the following window will appear (fig.28).

Uncheck the “Validate server certificate” box and verify that “Enable fast reconnect” box is checked.

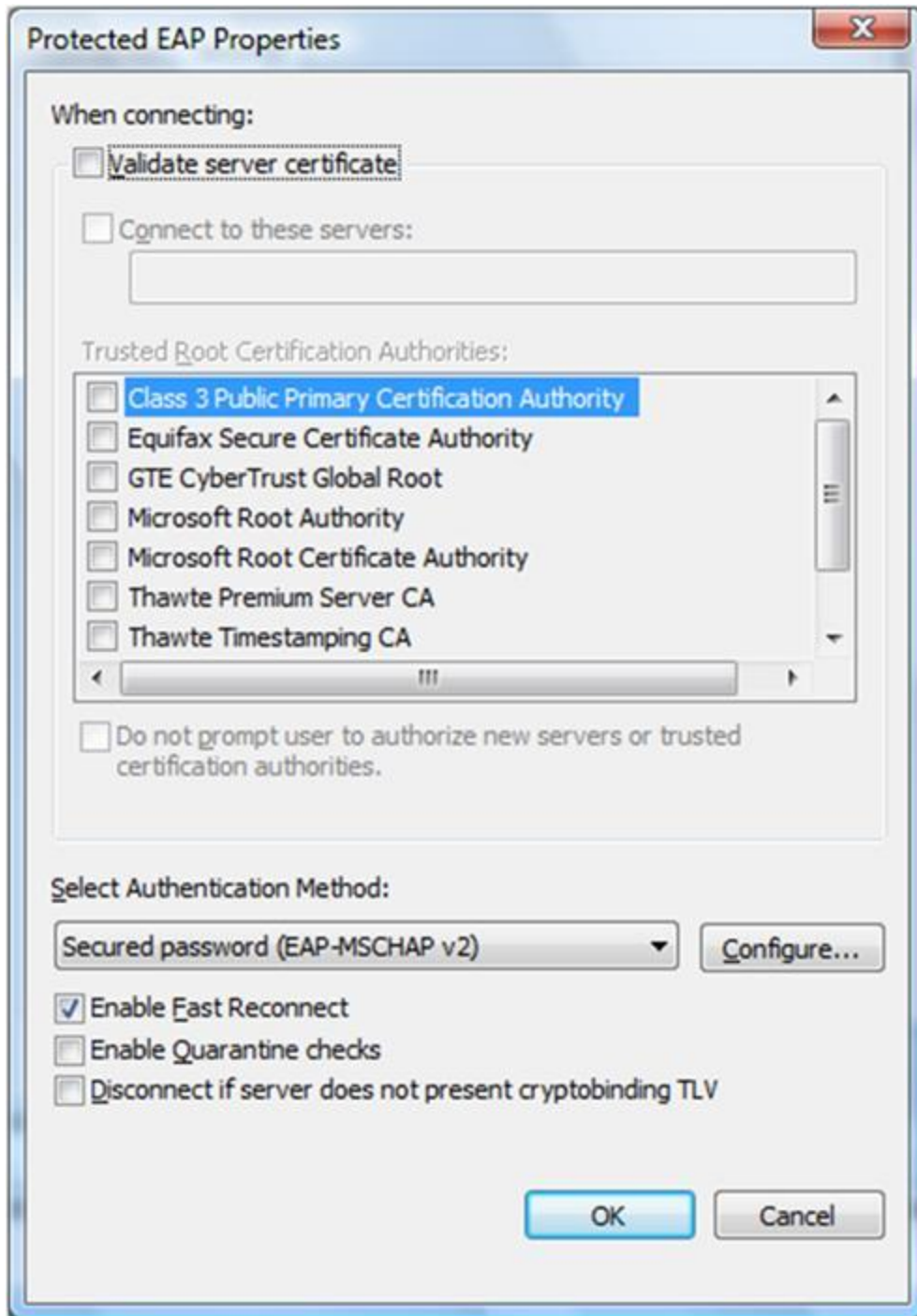


Fig. 28

Select the “configure” button, you will get a pop-up window (fig.29).

Uncheck the box for “Automatically use Windows logon name and password”

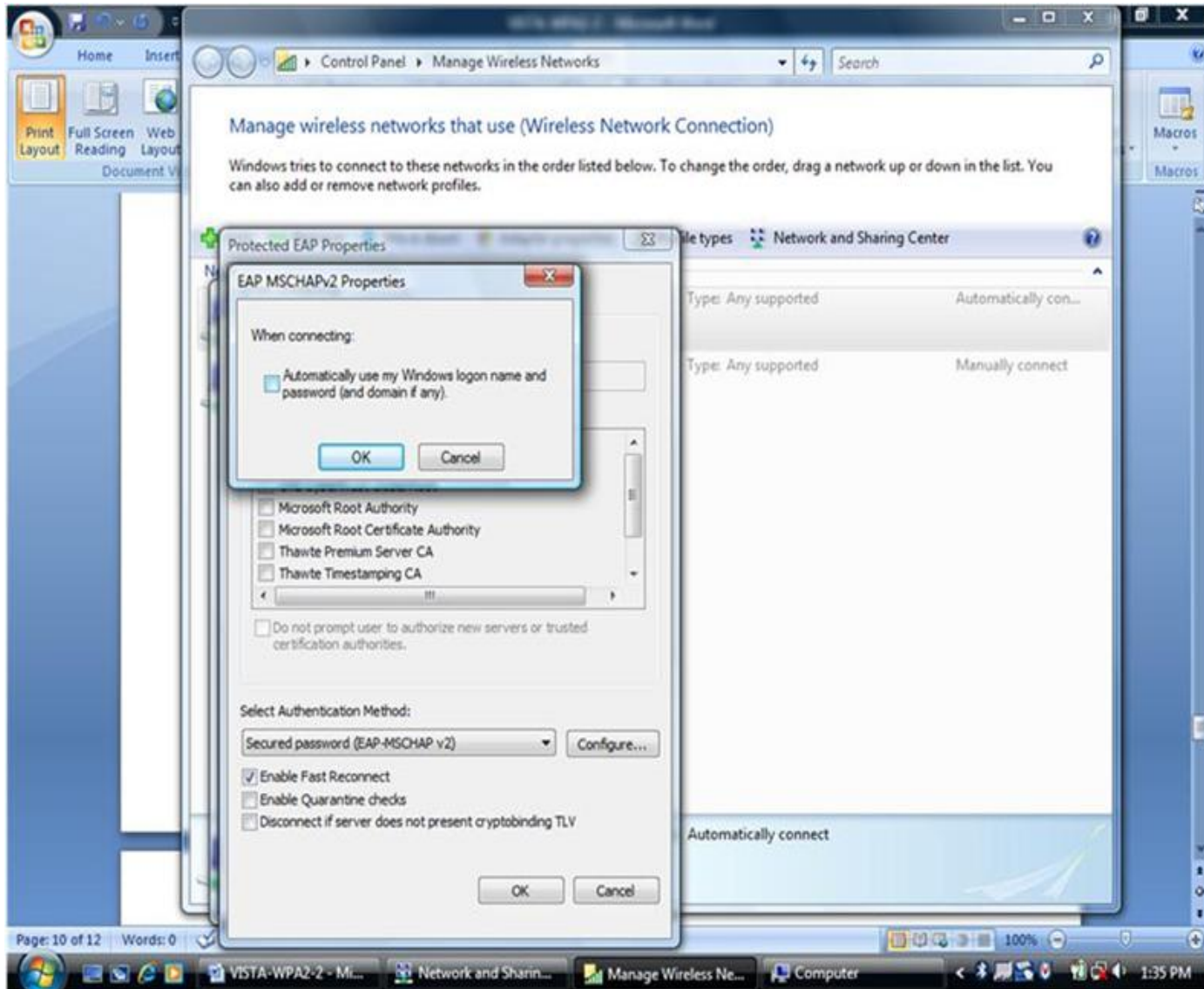


Fig. 29

Click Ok on each window until you get back to the “Manage wireless networks” window (fig.30)

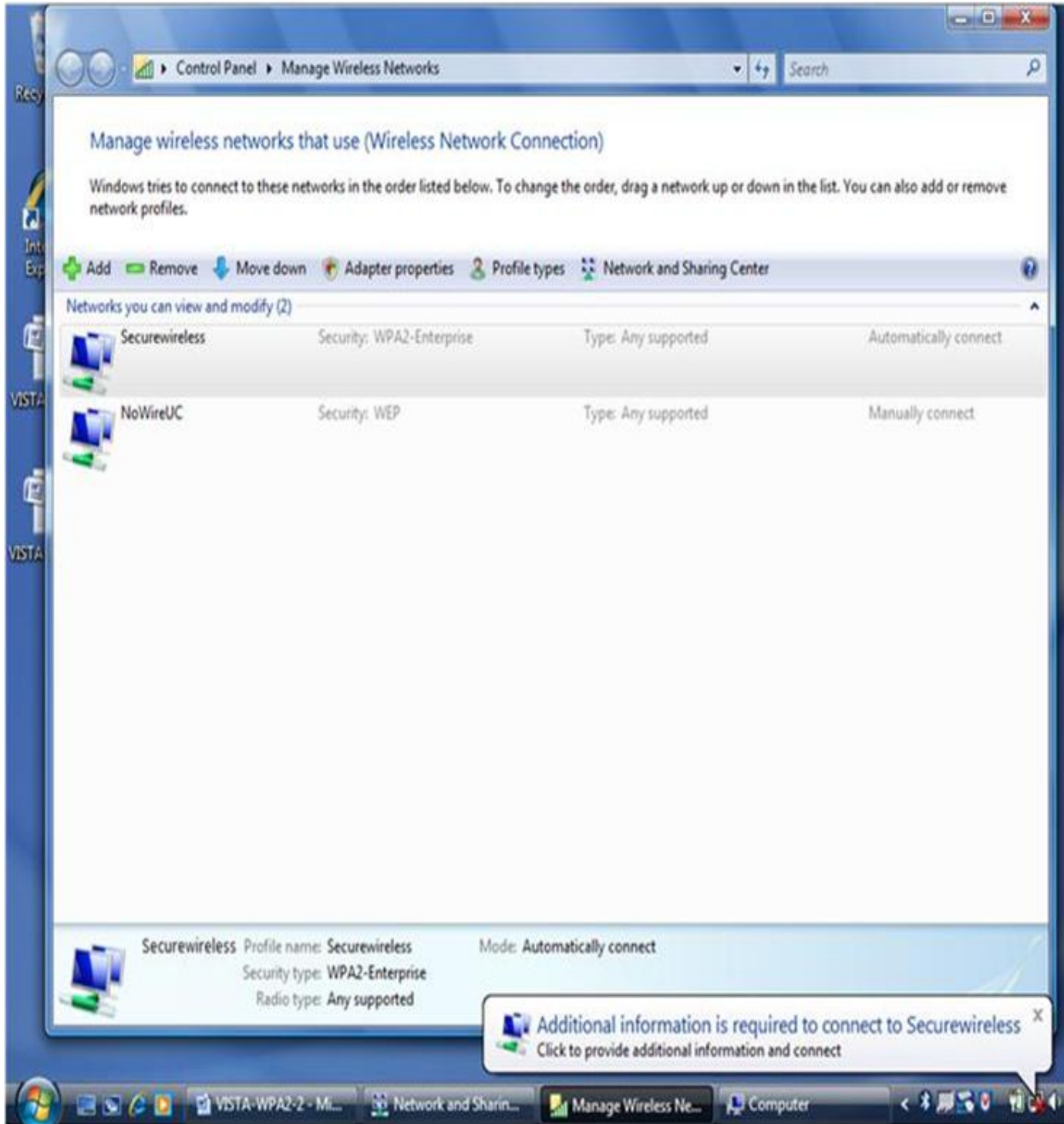


Fig. 30

If you are within range of an access point, you will see the text balloon

(Additional information is required to connect to Securewireless). Click on the text balloon and a window will appear as in fig.31



Fig.31

Enter your 6+2 username and password in the appropriate blanks, (this is the same as your Central Login username and password) **but leave the logon domain empty**. Click "OK" and you will be authenticated onto the wireless network using WPA2.